

Pre-publication errata in the final publication of the IPCC Synthesis Report

1. Introduction

On 1 November 2014, the IPCC Fifth Assessment Synthesis Report (SYR) was approved (Summary for Policymakers, SPM) and adopted (longer report) by the Panel at its 40th Session in Copenhagen, Denmark. The SPM and longer report were made public with the disclaimer *subject to copy-edit and layout*. In the period November 2014 – February 2015, during which the SYR (SPM and longer report combined) was copy-edited and prepared for printing and distribution, some errors were identified in Figure SPM.11, Figure 2.5, and Figure 3.2. These errors were processed in compliance with the *IPCC Protocol for Addressing Errors in IPCC Assessment Reports, Synthesis Reports, Special Reports or Methodology Reports*¹.

The errors in the approved/adopted SYR from 1 November 2014 are listed below, along with the corrections in the final publication.

2. Corrections in SYR Figures SPM.11 and 3.2

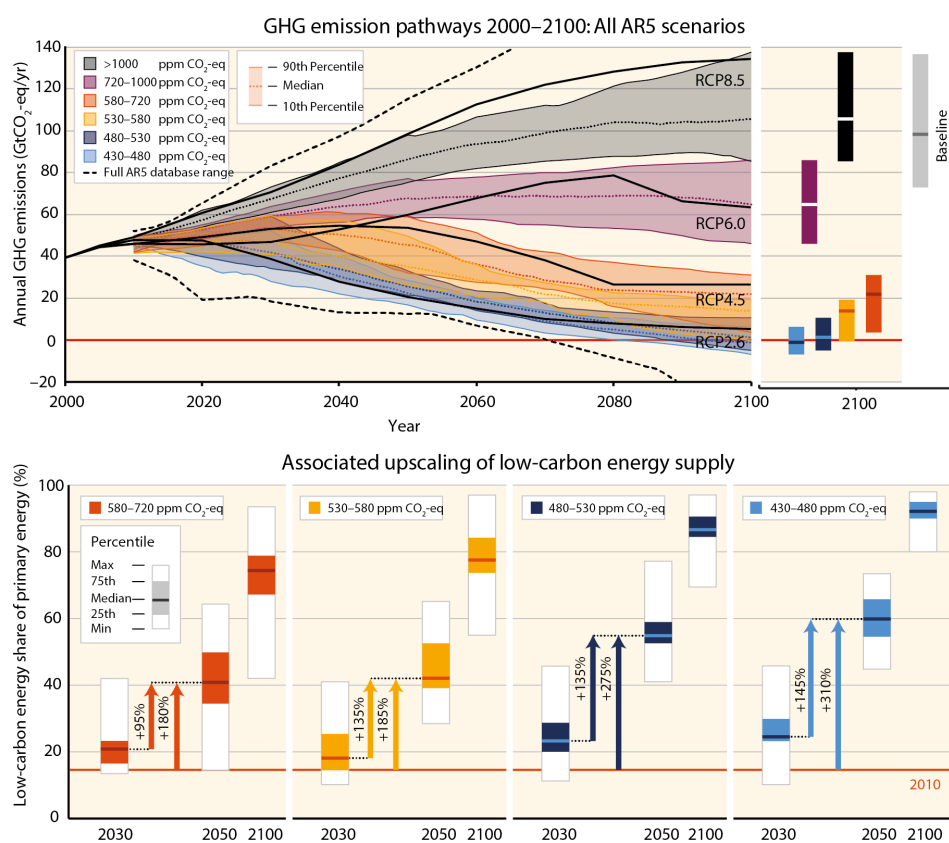
This correction concerns the SYR Figure SPM.11 and the identical SYR Figure 3.2. These figures are in their turn the same as Figure SPM.4 of the Working Group III contribution to the Fifth Assessment Report (2014), except for some minor layout changes. Working Group III has published an erratum regarding Working Group III Figure SPM.4.²

Data in the lower left panel of the figures were incorrect. All three orange bars for the 580-720 ppm CO₂eq category were slightly adjusted. The upscaling requirements next to the arrows were corrected from 105% to 95% for the period 2030-2050 and from 190% to 180% for the period 2010-2050. The corrected SYR Figure SPM.11/3.2 is shown below. The uncorrected figure is shown subsequently for comparative purposes. The captions are unaffected and remain unchanged.

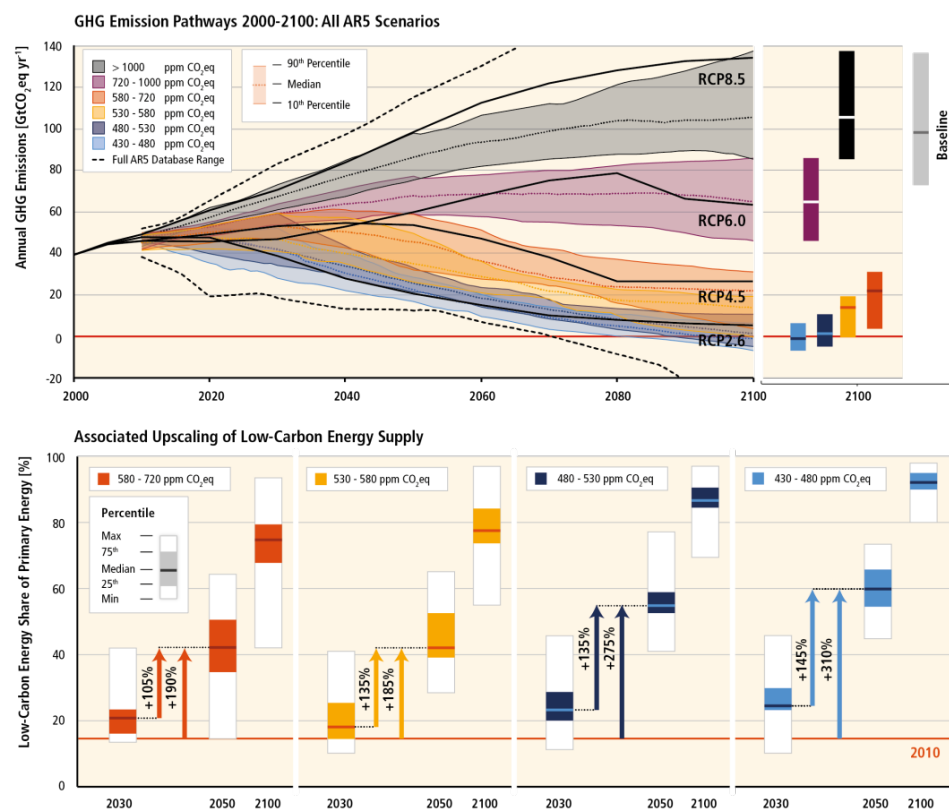
¹ http://www.ipcc.ch/pdf/ipcc-principles/ipcc_error_protocol.pdf.

² <http://mitigation2014.org/report/publication>

Corrected SYR Figure SPM.11/3.2 in final publication:



Original SYR Figure SPM.11/3.2 as approved/adopted by the IPCC 1 November 2014:

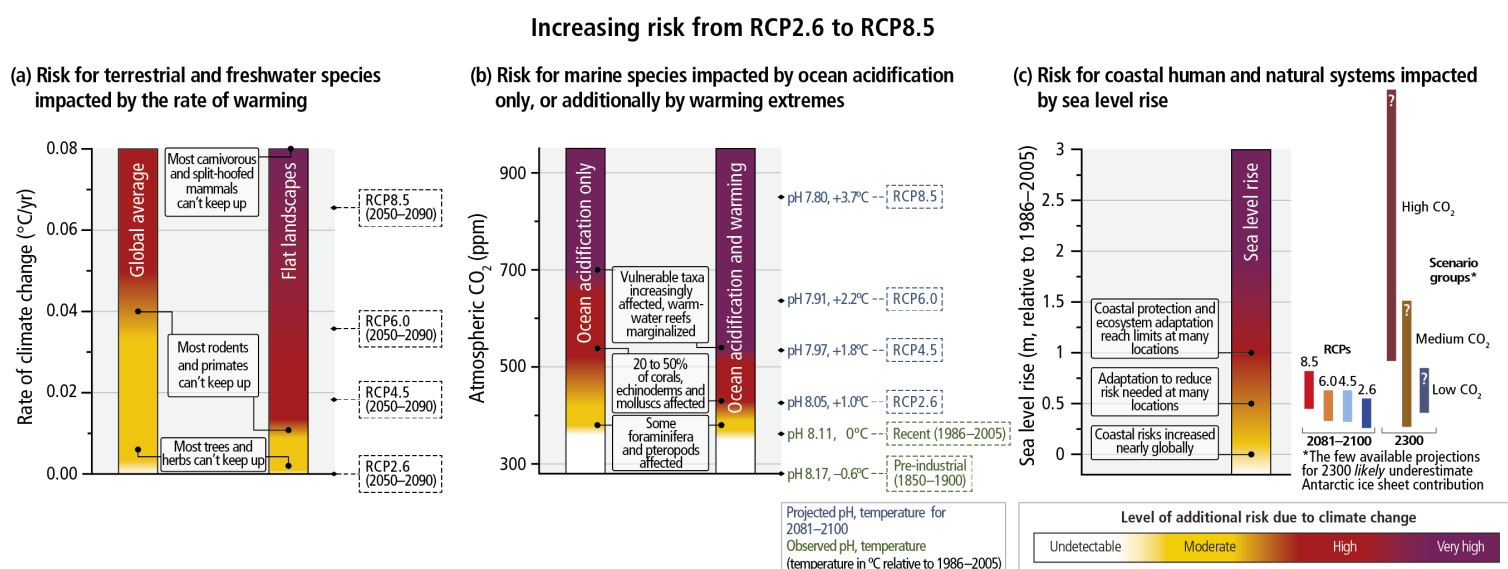


3. Corrections in SYR Figure 2.5

Changes to Figure 2.5 are below, along with the corrected and original versions of the figure.

- 1) In panel a, "most rodents, primates and molluscs" was changed to "most rodents and primates". The marker positions are consistent with the assessment for rodents and primates but not molluscs.
- 2) In panel b, "pH 8.07" was changed to "pH 8.11", and the corresponding black diamond was shifted from 380 ppm down to 362 ppm. These changes align the figure with the underlying assessment for the 1986–2005 time period.

Corrected SYR Figure 2.5 in final publication:



Original SYR Figure 2.5 as adopted by the IPCC 1 November 2014:

